



Custom Products & Services, Inc

3432 Denmark Ave #245

Eagan, MN. 55123-1088

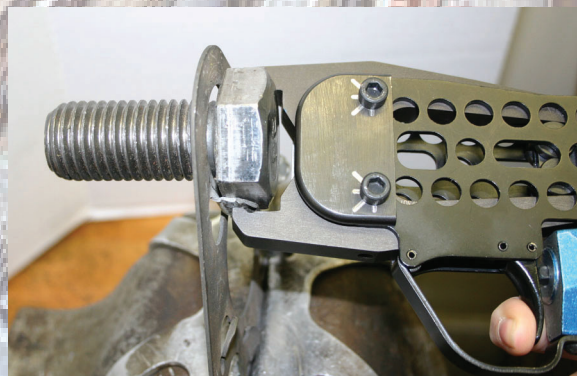
651-452-0113

sales@custom-products.com

www.custom-products.com



TAB BENDING TOOL FOLDS LOCKING TABS ON RAILCAR AXLE BEARING BOLTS



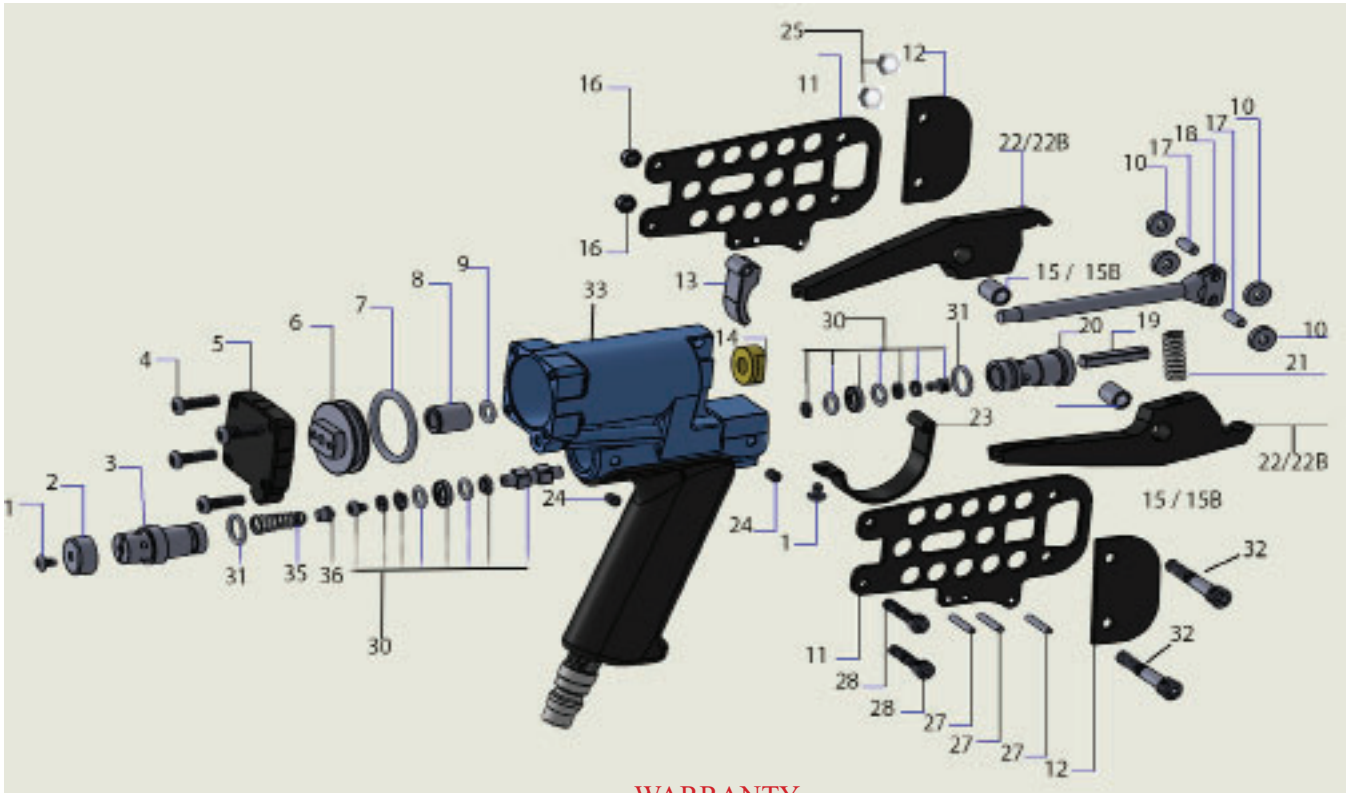
TOOL SPECIFICATIONS

MODEL #	FREIGHT AXLE	CAP SCREW SIZE	LOCOMOTIVE AXLE CLASS	LENGTH	WEIGHT
ARR-1000	Class E, F, 100 Tons	1" & 1-1/8"	G	9-1/2"	3.2 lbs
ARR-1250	Class G, 125 tons	1-1/4"		9-1/2"	3.2 lbs.

PARTS LIST & EXPLODED VIEW DRAWING

DWG #	PART #	DESCRIPTION	QTY	DWG #	PART #	DESC	QTY
1	ARRP-05D6	Bottom Head Bolt/ 5mm x .8	2	21	ARRP-40SR	Jaw Spring	1
2	ARRP-0401	Exhaust Cap	1	22	ARRP-1001-1	Jaw L. or R., #1000 gun	2
3	ARRP-WS1201W	Trigger Valve Guide-Rear	1	22-B	ARRP-1250-1	Jaw L. or R., #1250 gun	2
4	ARRP-0525	Hex Screw 5mm x .8 x 24	4	23	ARRP-2501	Trigger Guard	1
5	ARRP-13D1	Cylinder End Cap	1	24	ARRP-0505	Set Screws / 5mm x .8 x 5mm	2
6	ARRP-09D1	Piston End Nut	1	25	ARRP-25NN	Nylock Nut 6mm x 1.0	2
7	ARRP-219H	Seal/ See O-ring kit 34	1	27	ARRP-3018	Spring Pins 1/8" x 3/4"	3
8	ARRP-2201	Nut Guide	1	28	ARRP-1875	Allen Head Bolts 5mm x .8	2
9	ARRP-011H	O-ring/ See O-Ring Kit #34	1	30	ARRP-FSK	Internal Seal Assy (15 pcs)	1
10	ARRP-10D1	Rollers	4	31	ARRP-RSK	Front Seal Kit (8 pcs)	1
11	ARRP-23D1	Side Plates	2	32	ARRP-25AH	Allen Head Bolts / 6mm x 1.0	2
12	ARRP-JG	Jaw Guard	2	33	ARRP-Body	Main Body	1
13	ARRP-24D1	Trigger	1	34	ARRP-KIT	Complete Repair Kit	
14	ARRP-15D1	Bumper, Alum or Brass	1	34	ARRP-0301	Trigger Valve Seat	1
15	ARRP-1000-2	Bushing for #1000 gun	2	34	ARRP-0501	O-Ring Seat	2
15-B	ARRP-1250-2	Bushing for #1250 gun	2	34	AARP-0601	O-Ring Cap	2
16	ARRP-0508	Nylock Nut / 5mm x .8	2	34	ARRP-0701	Spacer	2
17	ARRP-5D12	Roller Pins	4	34	ARRP-0410	Hex Screw	1
18	ARRP-11D1	Rod Piston	1	34	ARRP-014A	O-rings	2
19	ARRP-1401	Trigger Stem	1	35	ARRP-1701	Rear Spring	1
20	ARRP-WS1202W	Trigger Valve Guide Front	1	36	ARRP-1601	O-Ring cap	1

All items in yellow are included in #34 "complete tool repair kit" and cannot be ordered separately



WARRANTY

The ARR series pneumatic tab bending tools are warranted for 1 year from date of invoice against defects in materials or workmanship. All warranty claims must be supplied in writing to request an RMA to return the tool for inspection. Normal or excessive wear and tear is not covered by this warranty.

These pneumatic tab bending tools are designed to be well balanced and ergonomic. Specifically designed for bending the lock tabs on railcar wheel locking plates.

SAFETY INSTRUCTIONS

1. Read this manual and understand all safety instructions before operation of the tool. If you have questions, please contact Custom Products & Services, Inc.
2. Only those tabs and bolts listed in the operating instructions are to be bent with the tool specific to the size. Any other use may damage the tool or cause harm to the operator.
3. Only the main air supply and lubricants listed in the instructions may be used.
4. For maintenance of the tab bender, only spare parts and jaws specified & supplied by Custom Products & Services shall be used.
5. Tab bending tools operated by compressed air shall be connected to compressed air lines where the maximum allowable pressure CAN NOT be exceeded by a factor of more than 10%.
6. When using the Tab Bender with compressed air, do not exceed the maximum recommended pressure setting detailed under "Tool Operation" on the next page.
7. The Tab Bender should be operated at the lowest possible air pressure setting that delivers the best results.
8. There is the possibility of fire and explosion when using oxygen or combustible gases for operating compressed air driven tab bender.
9. Carry Tab Bending Tool using only the handgrip and never by the trigger or with trigger actuated. Never carry the tool by the hose or pull hose to move the tool.
10. Disconnect the tool from air supply before cleaning, servicing and adjusting and during non-operation.
11. Wear Eye Protection.
12. Do not use a check valve or any other fitting which allows air to remain in tool.
13. Do not place hands or any other part of your body in the jaw area of the tool when connecting or disconnecting air supply.

AIR SUPPLY & CONNECTION

1. Many air tool users find it convenient to use an FRL (Filter-Regulator-Lubricator) to help remove moisture from the compressed air and inject light air tool oil into the tool internals to improve tool function and prevent internal corrosion.
2. The tool includes 1 ea. 3/8" quick connector (1/4" NPT threads). The fitting can be changed if it is not compatible with your current connectors.

LUBRICATION & MAINTENANCE

1. Disconnect the air supply for the tool before lubricating.
2. For best lubrication, install an in-line lubricator to your source air line within 20 ft. of the tool.
3. Wipe off excess oil at the exhaust.
4. Visually inspect tool for areas where metal-to-metal contact may require lubrication manually.

OPERATING THE TOOL

1. Protect your eyes and ears. Wear safety glasses with side shields and hearing protection.
2. Check and replace any worn components on the tool.
3. Add a few drops of lubricating oil to the air inlet, if not using in-line lubricators.
4. Attach a high-flow quick disconnect fitting to the butt end of the pistol grip (if not already installed).
5. Connect the tool to air compressor using 3/8" ID reinforced air hose. Hose should have a working pressure rating of 200 psi (13.8 bar) and female quick coupler.
6. Regulate the air pressure to obtain 70-110 psi at the tool.
7. Check for proper bending of the locking tab, and adjust pressure as necessary. Do not exceed 110 psi (7.6 bar).

CLEANING THE TOOL

1. Never use gasoline or other flammable liquids to clean the tool. Vapors in the tool may ignite by a spark and cause the tool to explode and result in death or serious injury.
2. Disconnect the air supply from the tool prior to repairing or cleaning.
3. Jaws should be kept clean. ALWAYS clean or service with air supply disconnected from tool.

TOOL SPECIFICATIONS

TOOL LENGTH	9.50"
TOOL HEIGHT	7.0"
TOOL WIDTH	1-3/4"
TOOL WEIGHT	3.2 lbs (1.45 kg)
AIR INLET	1/4" NPT
MAX PERMISSIBLE COMPRESSED AIR PRESSURE	110 PSIG (7.5 bar)
RECOMMENDED OPERATING PRESSURE	95 - 110 PSI (6.6 - 7.5 bar)
AIR CONSUMPTION	0.052 scfm @ 90 psi (6.2 bar)